

# Configuring child volumes in ElastiStor

This document explains how to control QoS requirements per virtual machine on ESX Server.

## Workflow

1. **Create NFS Storage Volume** This Volume is mounted as a Datastore on ESX Server.
2. **Create a Child NFS Storage Volume** The Child Volumes are mounted as separate folders (each representing a virtual machine) in the Datastore on the ESX.

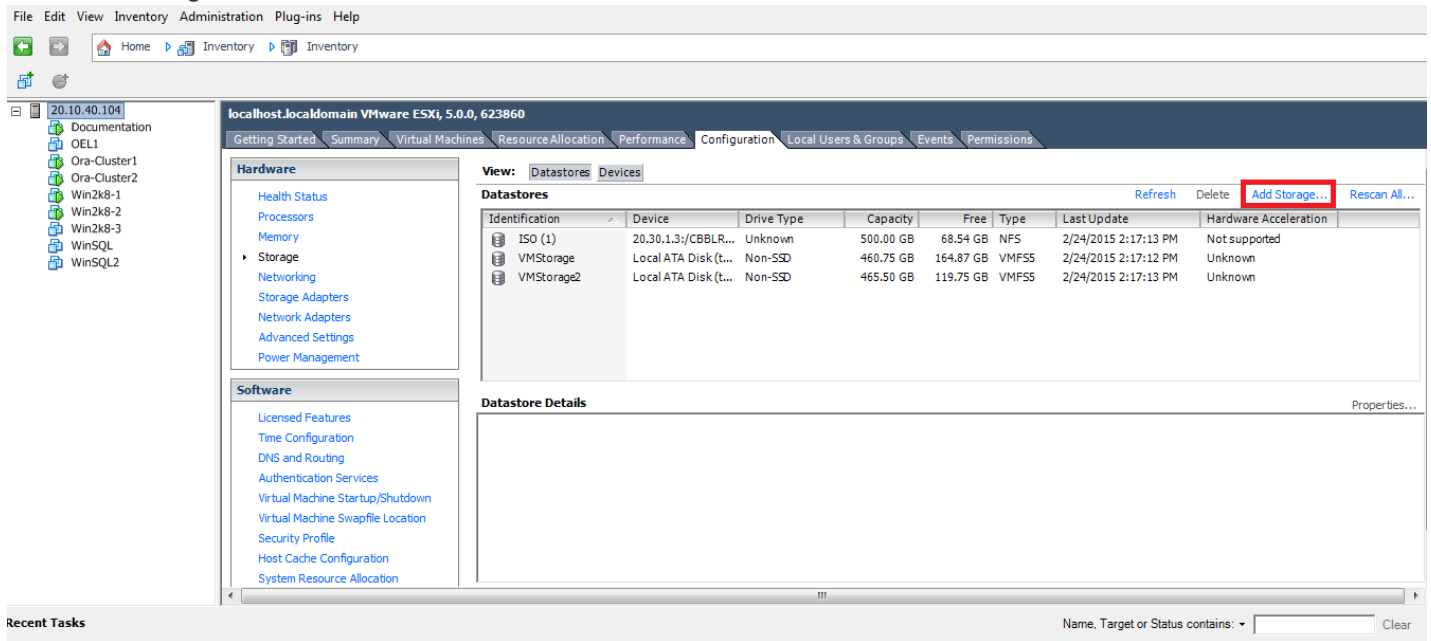
Performing the procedures empower you to control QoS requirements per VM. Each VM on the ESX Server can be guaranteed a specific amount of IOPS/throughput.

## Procedures

1. Create an NFS Storage Volume on ElastiStor. For details, see [Create Storage Volume](#).

**Note:** By default, the mount point of the Storage Volume is created in the following format: `Account_name_Storage_volume_name`. For example, `Acc1Voll1`.

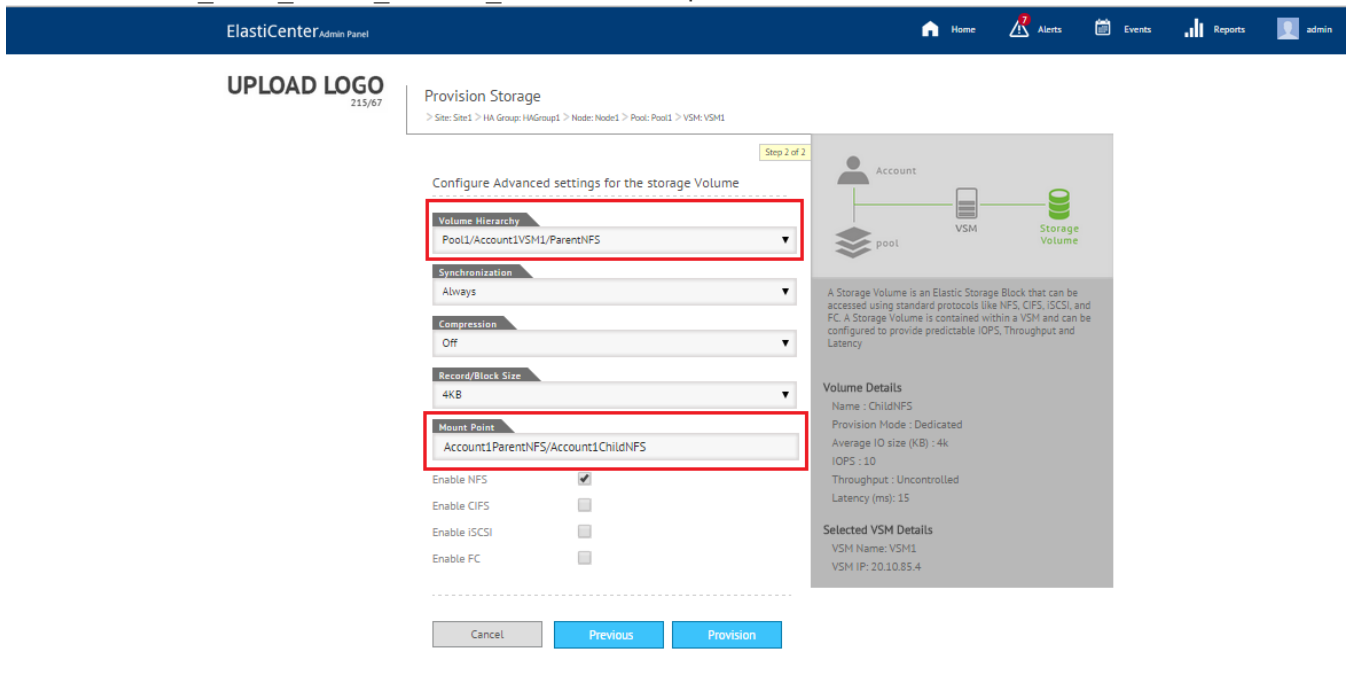
2. Add NFS Clients which can access the File system. For details, see the section [File system NFS options](#).
3. On your ESX Server, click Storage (Configuration > Storage).
4. Click Add Storage.



5. In the Select Storage type page, select Network File System and then click Next.
6. In the Locate Network File System page,
  1. In the Server tab, specify the IP address of the VSM (on which you provisioned volume on ElastiStor).
  2. In the Folder tab, specify the mount point of the volume in the following format: `/mount_point`
  3. Specify a name for the datastore and then click Next.
7. Review the summary details and then click Finish.

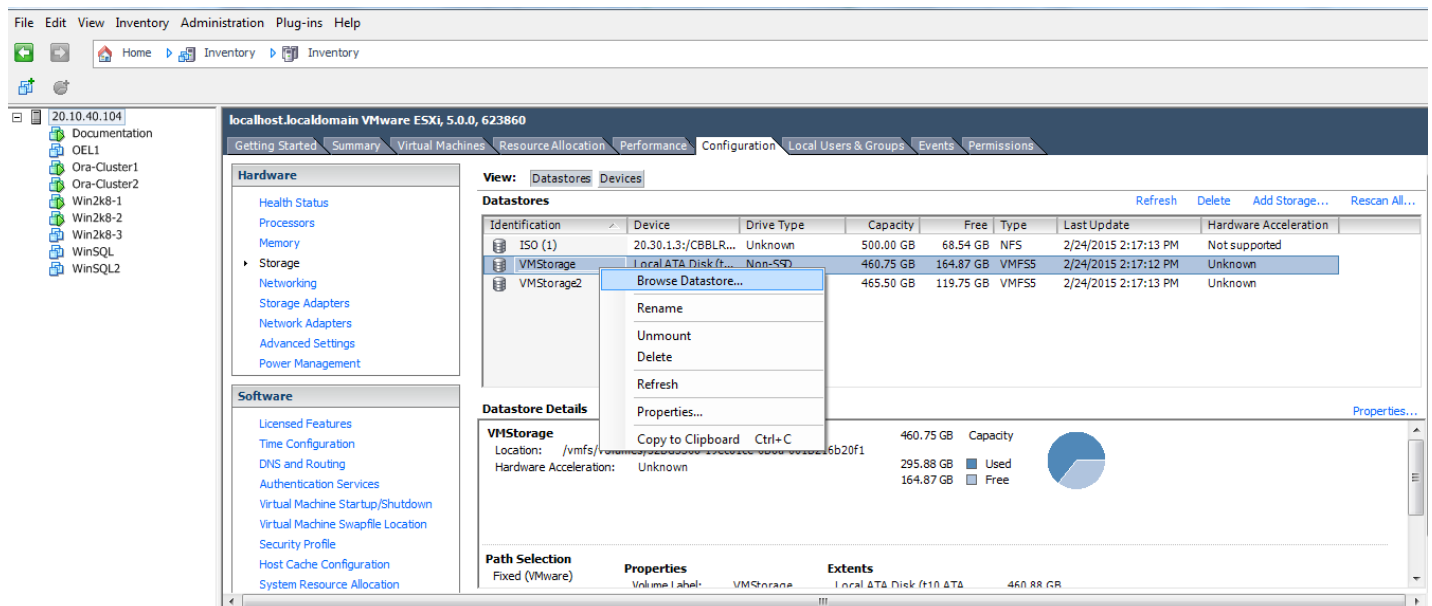
## 8. Create a child NFS Storage Volume on ElastiStor.

1. Specify the Volume hierarchy in the following format: Pool\_name/Account\_name\_VSM\_name/Parent\_volume\_name.
2. Specify the mount point of the child NFS volume in the following format: Account\_name\_Parent\_volume\_name/Account\_name\_child\_volume\_name. For example, AcclVol1/AcclChildVol1.



For further details, see [Create Storage Volume](#).

9. Add NFS Clients which can access the File system. For details, see the section [File system NFS options](#).
10. (On ESX) Right-click the datastore that corresponds to the parent NFS storage volume on ElastiStor.
11. Select Browse datastore.



The Child NFS Volume appears as a folder in the datastore. Add the VM disk in this folder.